

A MAGAZINE *from* UMRC

# Community

*Special Edition:* 2017 UMRC AND UMRC FOUNDATION ANNUAL REPORT

## United We Serve

UMRC IS ELEVATING THE ROLE  
OF CAREGIVER TO PROVIDE  
EXCEPTIONAL SERVICES FOR OLDER ADULTS



UNITED METHODIST  
RETIREMENT COMMUNITIES



UNITED METHODIST  
RETIREMENT COMMUNITIES  
FOUNDATION

## Our Mission

Building on a foundation of more than 112 years of service, United Methodist Retirement Communities promotes the wellness, dignity and independence of older adults by providing high-quality and innovative residential and supportive services.



UMRC: Welcoming Older Adults Since 1906.

## United We Serve

A Letter from  
UMRC Board Chair  
Rich Brown



*“...UMRC  
continues to  
demonstrate its  
entrepreneurial  
spirit as the  
most diverse  
senior living  
organization in  
Michigan...”*

— Rich Brown,  
UMRC Board Chair

I am honored to serve UMRC as Chair of the Board of Trustees as we help guide and lead UMRC's visionary growth and expansion. With its 112 years of service, I am proud that UMRC has remained true to its faith-based roots, providing the most advanced and compassionate care for older adults of all walks of life. At a point when other organizations might rest on their laurels, UMRC continues to demonstrate its entrepreneurial spirit as the most diverse senior living organization in Michigan in terms of services, housing options, and income markets. From new Independent Living Prairie Cottages on our Chelsea campus to doubling the capacity of our Huron Valley PACE Center in Ypsilanti (Program of All-inclusive Care for the Elderly), UMRC is committed to serving an older adult population that is growing at an unprecedented rate.

Thanks to YOU – individuals, foundations, businesses, churches, staff, residents, and families – 2017 was a spectacular year for UMRC, the UMRC Foundation, and those we serve! You help us live out our mission of “wellness, dignity, and independence of older adults” each day. Your generosity allowed us to break ground on the largest construction project in UMRC's history, including expansion and renovations to our Kresge Healthcare and Rehabilitation Center and construction of a state-of-the-art Wellness Center. Your support of Life Enrichment programming and the Rivertown Resident Services fund promotes a sense of well-being and purpose for older adults. Your kindness means the safety net of Benevolent Care is stronger than ever.

It is an extraordinary time for UMRC! Thank you for helping us grow for the future!

Sincerely,  
*Rich Brown*

**Rich Brown**  
UMRC Board Chair



A Letter from  
UMRC Foundation Board  
Chair Mark Ouimet



**P**ersonally, I have always felt that we, as a society, do not give older adults the attention they deserve. I have heard people describe philanthropy for children as an investment, while support for aging is an expense. While no one would argue the importance of children, it is also vitally important that we care for those who have cared for us.

When I was a boy, I remember my grandmother sitting in a wheelchair in the nursing home where she spent her last years. It left a strong impression on me. Even then, I knew we could – and should – do better.

As the population of older adults continues to grow, I realize that now is the time for me to be involved and engaged to do my part for this underserved mission. I am so proud to serve as the UMRC Foundation Board Chair as UMRC takes on the largest construction project in its 112-year history, supported by UMRC Foundation's largest ever fundraising campaign, *Growing to Serve*.

Whether creating private rooms and welcoming

spaces that feel like home for residents and guests at Kresge Healthcare and Rehabilitation Center; promoting fitness and vitality for older adults through our new Wellness Center; or elevating the essential role of our caregivers through the CNA Career Pathway Program and UMRC Foundation's Staff Scholarships, **UMRC is unparalleled in providing outstanding care for older adults, regardless of their income level.**

On behalf of the UMRC Foundation, thank you for being the key to our success in 2017!

Together, we are *United to Serve!*

With warmest regard,

**Mark Ouimet**

UMRC Foundation Board Chair



*"It is vitally important  
that we care for those who have cared for us."*

— Mark Ouimet, UMRC Foundation Board Chair

Architectural Drawing for McMullen Wellness Center.



A highlight of the UMRC Chelsea Master Plan is the state-of-the-art McMullen Wellness Center. The 14,000 square foot building will include a swimming pool, spa, walking track, and group fitness area.

# Dick and Norma Sarns—

## HONORARY CAMPAIGN CHAIRS



*“UMRC has cared for a great number of our close friends and church members over the years in just about every UMRC location.”*

— Norma Sarns, Honorary Campaign Chair

**D**ick and Norma Sarns are a team in every aspect of their lives. Dick, a WWII Navy veteran and engineer, and Norma, a teacher, established not one but two health-related businesses, developing life-saving surgical instruments and the world-renowned Sarns heart-lung machine. Later, their attention turned to rehabilitation for patients following heart surgery. In 1993, the Sarnses introduced NuStep in Ann Arbor, which celebrated the production of its 100,000<sup>th</sup> recumbent cross trainer in use worldwide in April 2017.

In addition to business, this couple shares a strong faith at West Side United Methodist Church and a firm commitment to serving older adults. It's what led them to support the UMRC Foundation's Benevolent Care Fund and to serve on the Foundation Board for more than a decade. They are also members of the Wesley Legacy Society, through a gift in their estate plan to the UMRC Foundation.

“We have always felt a sense of closeness to UMRC,” Norma shares. “UMRC has cared for a great number of our close friends and church members over the years in just about every UMRC location. We are impressed with the options available to people of all needs and incomes, from Rivertown in Detroit, to Chelsea Retirement Community, to PACE (Programs of All-inclusive Care for the Elderly) in Ypsilanti, Lansing, and Jackson.”

Today, the Sarnses continue as a team in supporting a bright future for older adults by serving as Honorary Chairs for UMRC Foundation's *Growing to Serve* campaign. “Our decision is connected to our faith,” explains Dick. “We have found UMRC and UMRC Foundation to have integrity, and we have a lot of respect and confidence in the leadership team, Boards, and staff. We look forward to seeing a lot of exciting changes and continued expansion at UMRC.” ■



# Volunteers Rock

## JAMMING WITH THE HURON VALLEY PACE MEN'S GROUP

When Steve Sarns of Dexter joined the UMRC Foundation Board, he had just been through some life-changing experiences, including cancer treatment and semi-retirement from his family's company. During a tour of UMRC's Huron Valley PACE in Ypsilanti, he wanted to help. "I love the concept of PACE," Steve says. "When I heard about their Men's Group, I said, 'That's it!' I wanted to be part of it!"

The Men's Group consists of a dozen or so PACE participants who meet once a week with social work intern, Max McIlroy, and volunteers, Steve Sarns and John Felton, whose wife, Sonja, is the Executive Director at Huron Valley PACE. Sonja suggested that John might enjoy volunteering after his retirement. "She always encouraged our children to volunteer," says John. "I now understand my family's passion for working with older adults."

Max says volunteering in retirement homes throughout high school sparked his interest in serving older adults, too; something he hopes to continue upon completing his Master's of Social Work degree at University of Michigan. "I believe in providing older adults opportunities to remain independent and active, which has an immensely positive impact on their overall health and well-being."

Men's Group covers a variety of topics, including mental health, grief, and family, along with strategies to overcome any difficulties they may be facing. "It's so helpful for them to have someone to listen to their stories," says Steve. "The Men's Group gives them purpose."

Other activities, including musical performances, have grown out of the interests and talents of the group.

Max says, "Men's Group is a very rewarding experience for me, and one I look forward to every week." Steve agrees. "I always gain something from these guys." ■

Men's Group Performs at Huron Valley PACE Prom.



Armando Gets Set on Drums.



# Annual Block Party a Hit



Rivertown Resident James Brown with Julia Szuper, Executive Director of Thome Rivertown.

## RIVERTOWN BLOCK PARTY Serves Up Smiles

Residents and staff of UMRC's Thome Rivertown Neighborhood in Detroit enjoyed a sunny afternoon of food, music, and dancing at this year's 4th annual Block Party on June 8! Members of the UMRC Foundation team were among the volunteers who helped make the day a success.

"The older adults we serve at Rivertown look forward to this event each year," says Julia Szuper, Executive Director of Thome Rivertown Assisted Living. "It is the perfect time for residents to spend time outside with their friends, enjoy favorite picnic foods, and just have fun!"

One of the priorities of UMRC Foundation's *Growing to Serve* campaign is the Resident Services Fund for Rivertown's Assisted Living residents. "This fund will help provide items that are essential to our residents' quality of life," explains Julia. These include medical equipment, basic home furnishings and linens, exercise equipment to stay active, and more. To learn how you can help, contact the UMRC Foundation at 734.433.1000 ext. 7502. ■





## FOCUS ON FAITH

# Dolores Chatigny

RESIDENT OF THE CEDARS OF DEXTER

A retired hospice director, Dolores Chatigny grew up in the Catholic faith. A member of St. Joseph's Catholic Church in Dexter, Dolores serves as a Eucharistic minister, taking communion to shut-ins and bringing parishioners to church. "It is wonderful knowing I can help them live out their faith."

When her priest asked her to take on a grief ministry, she agreed. "I feel very honored to do this. When you've experienced grief, you know what it's like," says Dolores whose personal loss includes her mother as a young woman, one of her children, and her two husbands. "I understand how alone you can feel and that it is normal. It takes time and patience."

"My faith has helped me through these trials," says Dolores. "Now I use this experience to help others. I believe God was leading me here."

Dolores lives at The Cedars of Dexter with her toy poodle, Brutus. "I am so impressed with this beautiful community. I love living here." ■



*"The love God gives you, you have to give to others. Love is the most important thing you can have. With love, you have peace."*

— Dolores Chatigny



### Pet Therapy Brings Joy.

Resident Betty Beese enjoys a visit from a furry friend at the first annual Halloween Dog Show at Glazier Commons. Thanks to Therapaws of Michigan, this event provided smiles and tail-wagging fun for residents, families, dogs, and owners! Therapy dogs visit the Chelsea Retirement Community campus an average of four days a week to enhance physical and mental well-being for older adults.



# 2017: Highlights of A Remarkable Year



UMRC Strategic Team Celebrates Groundbreaking.

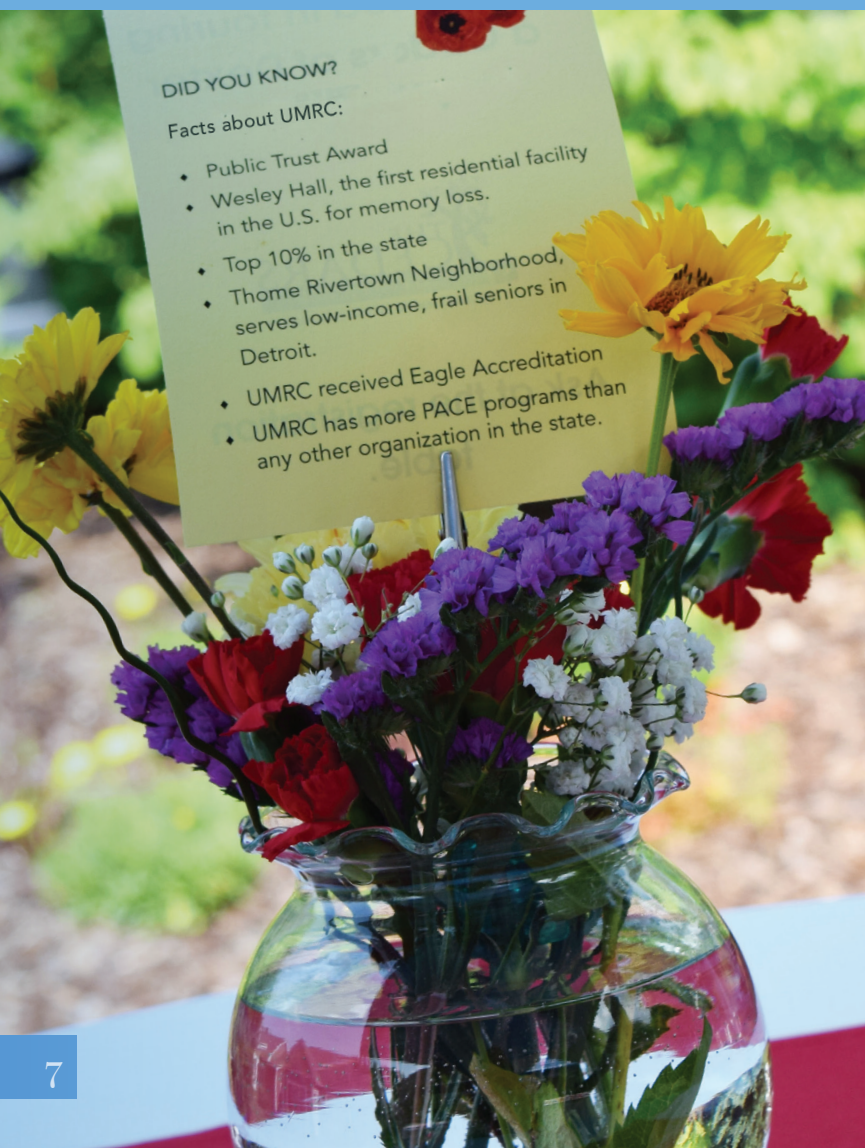


The **UMRC Foundation** hosted a **VIP GROUNDBREAKING EVENT** at UMRC's Chelsea Retirement Community campus on November 28, 2017. This landmark event launched UMRC's largest construction project in its 112-year history and marked the public kick-off of UMRC Foundation's **Growing to Serve** campaign.

.....

## The 2017 Garden Party Was a Success!

Proceeds from UMRC Foundation's 8th annual Garden Party, its signature fundraising event, topped \$110,000 in 2017! The generosity of individuals and event sponsors is transforming Kresge Healthcare and Rehabilitation Center for our short-term guests and long-term residents requiring skilled nursing care. Beautiful private rooms, comfortable common spaces, and caregiver training using the *Household Model*, will create an active, vibrant setting where older adults – and caregivers – flourish.



### DID YOU KNOW? Facts about UMRC:

- Public Trust Award
- Wesley Hall, the first residential facility in the U.S. for memory loss.
- Top 10% in the state
- Thome Rivertown Neighborhood, serves low-income, frail seniors in Detroit.
- UMRC received Eagle Accreditation
- UMRC has more PACE programs than any other organization in the state.

Odie Elden and Daughter Nancy Wiley







**UMRC FOUNDATION'S  
\$26 MILLION  
COMPREHENSIVE CAMPAIGN**

supports UMRC's  
priority initiatives including:

•  
**CAPITAL PROJECTS**

Expansion and Renovation  
**OF KRESGE HEALTHCARE  
AND REHABILITATION CENTER**

**MCMULLEN WELLNESS CENTER**

•  
**RESIDENT SERVICES  
AND LIFE ENRICHMENT ACTIVITIES**

•  
**BENEVOLENT CARE FUND**



**AN ANONYMOUS  
\$1.5 MILLION MATCHING  
GRANT**

toward capital and unrestricted  
gifts to the **Growing to Serve**  
campaign means every gift  
is twice the blessing!

**Words of praise**

*"You take such good care of my mom!  
I'm amazed at the personal care that you  
give. The caregivers know everyone's names,  
even if they aren't the direct caregiver.  
CRC is a fabulous place ...  
I can't say enough good about it!"*

— Lynda Chaney, daughter of Chelsea Retirement  
Community resident Kathryn Chaney.



**UMRC Employees Go Above and Beyond!**

The UMRC Foundation's **Growing to Serve** Employee Giving Campaign concluded on November 29, 2017. New this year, Rich and Karen Brown matched all new employee gifts up to \$10,000! The campaign ended with tremendous success with over 115 employee donors who helped us reach the match and beyond! We are extremely thankful for our employees' participation in this campaign. The Staff Giving Tree proudly displays their names.



**THE UMRC FOUNDATION  
IS THANKFUL**

for the generosity of **UMRC  
staff across all eight locations**  
and our **UMRC residents** who  
show their compassion  
in so many ways!  
Resident Campaigns  
at Chelsea Retirement  
Community and The Cedars  
of Dexter helped raise

**NEARLY \$140,000**

toward the Kresge Center  
and McMullen Wellness Center  
capital projects!

# 2017 Financial Report

## INCOME STATEMENT

	UMRC Obligated Group		UMRC With All Affiliates	
	2017 (Year Ending Dec. 31)	2016	2017	2016
Operating Revenue	33,951,382	33,642,842	54,618,526	47,794,597
Operating Expenses	34,151,834	32,792,405	55,478,747	49,248,663
Operating Margin	(200,452)	850,437	(860,221)	(1,454,066)
Non-Operating Gain(Loss)*	9,436,655	12,060,423	13,334,199	14,152,595
<b>Total Margin</b>	<b>\$9,236,203</b>	<b>\$12,910,860</b>	<b>\$12,473,978</b>	<b>\$12,698,529</b>

\*UMRC Obligated Group includes Chelsea Retirement Community, UMRC Corporate, UMRC Foundation, and The Cedars of Dexter. UMRC with ALL Affiliates also includes UMRC's proportionate ownership of Silver Maples, The Pines, Thome Rivertown Neighborhood, and all three PACE centers. Non-Operating Gain in 2016 is a result of the philanthropic success of the UMRC Foundation. Operating loss in 2017 is driven by start-up losses planned with PACE organizations.

## 2017 CAPITAL INVESTMENTS

Glazier Commons  
and Towsley Village  
**\$3,149**

Dancey House  
**\$149,896**

Kresge Healthcare  
and Rehabilitation  
Center  
**\$14,271**

The Cedars of Dexter  
**\$157,175**

Chelsea Campus  
Infrastructure  
**\$543,870**

Chelsea Campus  
Master Plan  
**\$10,455,710**

Huron Valley PACE  
**\$402,112**

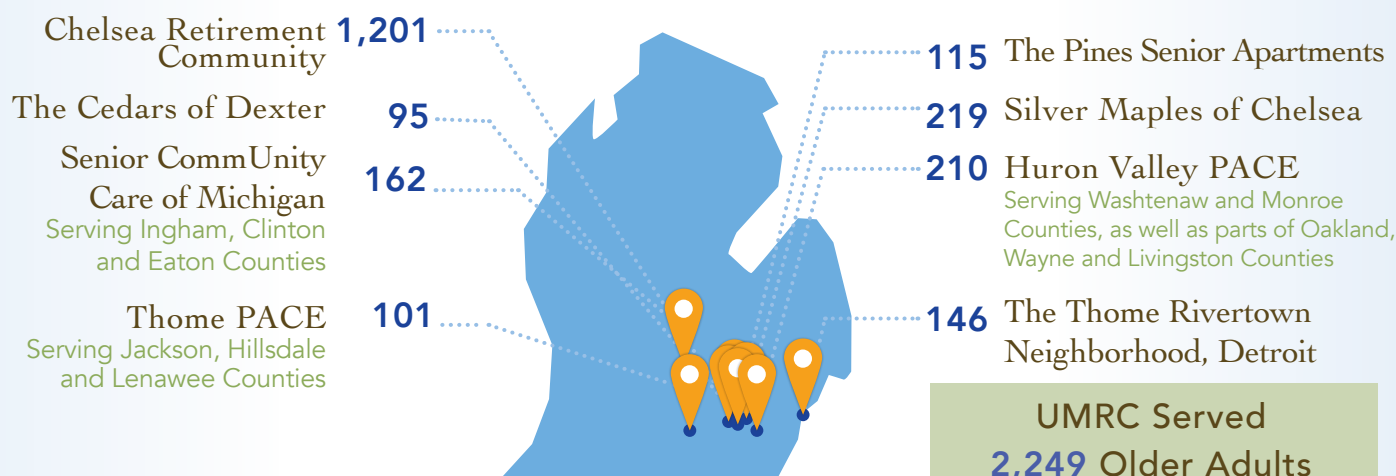
Thome PACE  
**\$14,741**

Senior CommUnity  
Care of Michigan  
**\$101,000**

UMRC reinvests **ALL**  
margin and philanthropic  
dollars into new programs  
and facilities.

In 2017, UMRC made total  
Capital Investments of **Over**  
**\$11.8 Million** to improve the lives  
of older adults in Michigan.

## UMRC OLDER ADULTS SERVED





# UMRC Foundation

## MISSION STATEMENT

The UMRC Foundation's mission is to promote the wellness, dignity, and independence of seniors by supporting the residents, staff, and communities UMRC serves.

3

UMRC Foundation provided **Community Grants** to three local nonprofit organizations.



**FOCUS:  
HOPE**



**YPSILANTI  
MEALS  
ON WHEELS**



**FRIENDS  
OF JACKSON  
SENIORS**

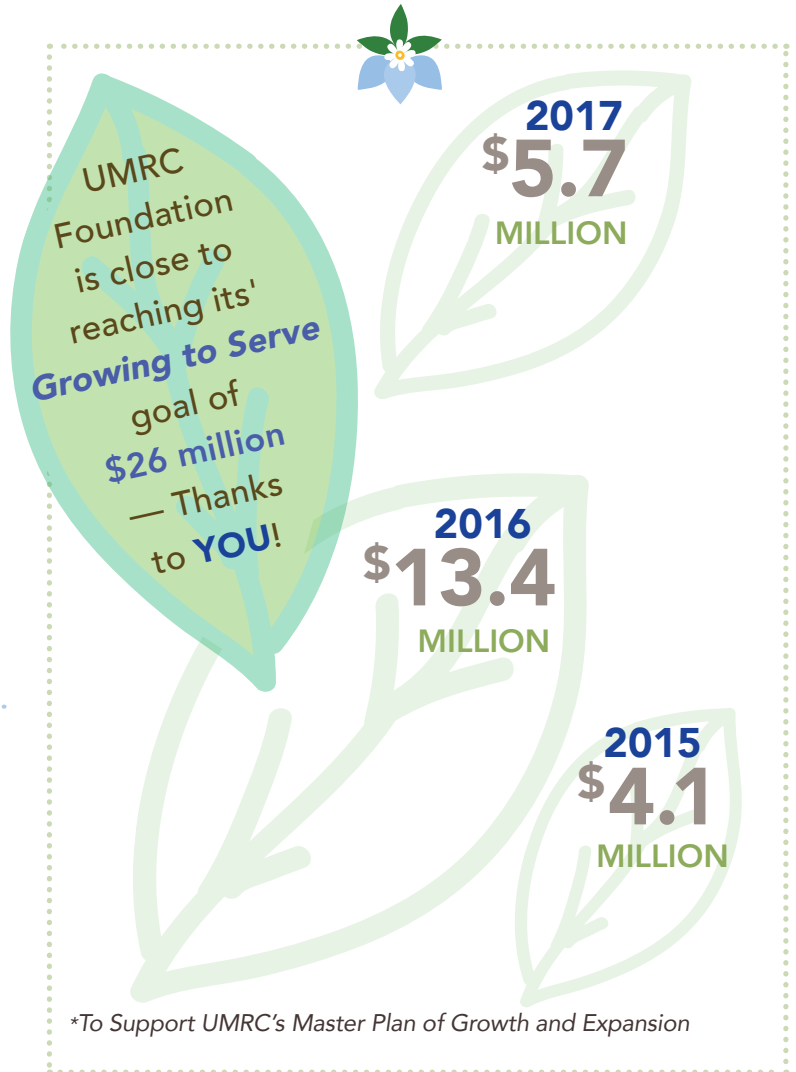
14

The UMRC Foundation's **Emergency Aid** program helped ease a financial crisis for fourteen UMRC staff members.



15

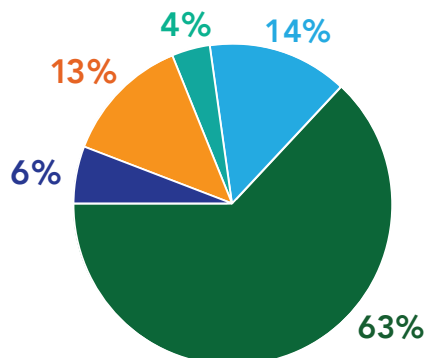
Fifteen UMRC employees were able to advance their educational and career goals, thanks to the **UMRC Foundation Competitive Scholarship** program.



## COMBINED UMRC AND UMRC FOUNDATION EXPENSES

### 2017 Expenses by Type

Only **4%** in fundraising expenses! UMRC Foundation is committed to being a good steward of your gifts.



- Direct resident care and supportive services
- General Administrative
- Fundraising
- Depreciation and Utilities
- Interest, Taxes and Insurance

# Elevating the Role of Caregiver

## GRANT FROM RALPH C. WILSON, JR. FOUNDATION Highlights UMRC Care

In a recent AARP study, 84% of caregivers surveyed said they wished they had more information and training in caring for older adults.

UMRC understands the importance of appropriate education and training for its caregivers to be effective in the important work they accomplish each day. As part of the expansion and renovations to our Kresge Healthcare and Rehabilitation Center, UMRC is implementing the culture change model. This includes creating two households, one for traditional long-term care and one for older adults living with dementia, to transform Kresge Center into a warm, welcoming setting that feels like home. Private rooms and bathrooms, comfortable common living areas, and a focus on each resident's needs and wishes are the hallmark of culture change.

Hand in hand with the new construction is proper culture change training for all Kresge Center caregivers. A two-year grant of \$275,000 from the Ralph C. Wilson, Jr. Foundation is making this possible.

"As our nation is aging, the need to support caregivers has never been more important," says UMRC Foundation President Wendy Brightman. "We are grateful that the Ralph C. Wilson, Jr. Foundation shares our goal to honor and elevate the role of the caregiver. Engaging and empowering our staff will result in greater care for the older adults we serve, most of whom are low-income."

In addition to the Wilson Foundation grant, proceeds of \$110,885 raised at the UMRC Foundation's 8th annual Garden Party event in 2017 also support the culture change model, including a \$7,000 grant from the Ann Arbor Area Community Foundation. ■

**UMRC** will be the region's *only* skilled nursing center to incorporate this physical homelike setting and culture change philosophy into its service model, transforming the care its residents receive, *regardless of their income.*



Amy Craig and Resident.



Physical Therapy Assistant Cody Rohn Helps Guest Gain Strength.





A photograph of three individuals, two men and one woman, standing in front of a vibrant mural featuring large, stylized flowers in shades of pink, purple, and green. The man on the left is wearing a dark blue V-neck shirt. The woman in the center is wearing a light blue V-neck shirt. The woman on the right is wearing a red tank top.

## CNA CAREER PATHWAY PROGRAM PROVIDES LIFE-CHANGING OPPORTUNITY

# Three Journeys to Caregiving

Not long ago, three Kresge Center Certified Nursing Assistants (CNAs) had very different jobs. David Smith provided in-home care. Hannah Dunsmore cared for pets. Maggie Stafford waited tables. Then they learned about UMRC's CNA Career Pathway Program. For each of them, the program has been life-changing.

"I had been looking for a different direction," says Maggie, a mother of two. "I wanted to provide a different kind of service with long-term impact. This program offers that opportunity."

The CNA Career Pathway Program began in 2017 as a way to attract new career candidates or those seeking a second career in geriatric care. UMRC's program pays all associated training costs upfront, as well as a competitive hourly wage to qualified students while completing classes. In return, program graduates commit a minimum of one year of employment at UMRC's Kresge Rehabilitation and Healthcare Center.

From left to right; David Smith, Hannah Dunsmore, and Maggie Stafford.

Hannah and David started the program together. "I really like the care aspect of becoming a CNA," says Hannah. "It is interesting getting to know people, to hear their stories and appreciate the value of life." David, who works primarily on the rehabilitation floor, says, "I like seeing the guests' progress and helping them get back to their lives."

All three CNAs feel they have received a unique career opportunity. Thanks to the UMRC Foundation's Staff Scholarship program, each of them is considering further education in healthcare as well.

"It feels like UMRC wants us to succeed," says Hannah. "There are great opportunities for career development here – not many places would do that. There are amazing people working here."

To learn more about the CNA Career Pathway Program, visit <http://umrc.com/employment/care-giver-career-pathway/> or contact **UMRC Human Resources** at 734.433.1000 ext. 7512. ■





## UMRC EARNS Great Place to Work® CERTIFICATION

One of UMRC's goals was to become an employer of choice. This year, *Fortune's* "Best Workplaces" lists identified a new category of Great Place To Work® certifications in the area of Aging Services. UMRC applied for this designation, and staff members were surveyed in May 2018.

As a result, UMRC is pleased to announce that it has achieved the Great Place To Work® certification, a nationally recognized award! UMRC is now eligible for placement on any of the *Fortune* "Best Workplaces" lists, including the 2018 "Best Workplaces in Aging Services" list. UMRC will be notified in early fall 2018 if it has achieved this specific designation.

"UMRC leaders and staff across our organization have worked tirelessly to support one another and provide the best possible care for our residents and participants," says UMRC Vice President of Human Resources, Michelle Baldwin Henderson. "We could not be prouder of this accomplishment!"

UMRC has earned the Great Place to Work® certification through May 2019. "We will continue to apply for this important designation each year, which will require continual improvement from UMRC to sustain," adds Michelle. "We accept this challenge!" ■

Interested in joining our team?  
Contact **UMRC Human Resources**  
at **734.433.1000** ext. **7441**.

# Dawn Buchbinder

## PROVIDES COMPASSIONATE CARE AT THOME PACE

Dawn Buchbinder, LMSW, has cared for older adults at Thome PACE in Jackson since it opened in 2016.

"I learn so much from the participants," says Dawn. "They are so respectful and appreciative. At this stage of life, they long for a sense of family, and Thome PACE provides that for them. It's a great feeling."

As a social worker, Dawn ensures that PACE participants have the autonomy to live as independently as possible. Thome PACE Executive Director Susan Decker describes Dawn as a "fierce advocate for older adults, checking her moral and ethical compass to ensure the right decisions are made for the right reasons." Dawn currently serves approximately 50 Thome PACE participants, both in-home and at the Day Health Center.

Part of the Thome PACE interdisciplinary team, Dawn says she loves meeting each day with her fellow teammates to plan each participant's care. "It's amazing!" says Dawn. "This only happens at PACE. It's great to work with such compassionate people." ■





# ‘Puppy Raisers’ Linda and Charlie Britton

**P**rairie Cottage residents and long-time dog lovers, Linda and Charlie Britton weren’t sure if they wanted the commitment of another pet. Then friends from church and Linda’s quilt guild introduced them to Leader Dogs for the Blind. The Brittons were excited about the program and wanted to help. Today, Linda and Charlie are training their fourth leader dog, a yellow lab named Journey, to provide service for a blind or visually-impaired person.

As “puppy raisers”, the couple is responsible for housebreaking the puppy, teaching good manners and basic obedience, and socializing the dog.

Linda and Charlie believe training a leader dog keeps them active and healthy, as well as offers social opportunities. “We automatically have something to talk about with people,” says Linda.

“You have to be prepared to give your dog up after a year,” says the couple, whose first two leader dogs are now helping clients in Texas and Costa Rica. “But, it is very rewarding and heartwarming when you get to meet the client with the dog you helped train,” says Linda. “The dog really belongs to that person.” ■



## United Methodist Retirement Communities Welcomes Dogs!

To learn more about  
UMRC’s new  
**Prairie Cottages,**  
contact  
Sales and  
Admissions  
at  
**734.433.1000**  
ext. **7365**

## 2017 COMMUNITY PARTNERSHIPS

United to Serve... UMRC is not alone  
in its mission to care for older adults.

We are grateful for our community  
partners which include:

5 Healthy Towns Foundation  
Alzheimer's Association Michigan  
Great Lakes Chapter  
Ann Arbor Area Community Foundation  
Area Agency on Aging 1-B  
Aroha Philanthropies  
Caring Hearts Home Health  
Chelsea Chamber of Commerce  
Chelsea Community Foundation  
Chelsea Rotary  
Chelsea Senior Center  
City of Chelsea  
City of Dexter  
Community Foundation of Southeast Michigan  
Council of Michigan Foundations  
Department of Family Medicine, Michigan Medicine  
Detroit Area Agency on Aging  
Detroit Housing Commission  
Edward N. & Della L. Thome Memorial Foundation  
Grantmakers in Aging  
The Harry A. and Margaret D. Towsley Foundation  
The Harry and Jeanette Weinberg Foundation  
Henry Ford Health System  
Huron Valley Ambulance Inc.  
Jackson Community Ambulance  
Jefferson East Business Association  
The Kresge Foundation  
LeadingAge  
LeadingAge Michigan  
Meals on Wheels  
Medical Care Facility & Rehabilitation Services  
of Ingham County  
Michigan Chamber of Commerce  
Michigan Department of Licensing  
and Regulatory Affairs  
Michigan Health Endowment Fund  
Michigan State Housing Development Authority  
Morrison Senior Living  
National Affordable Housing Trust  
Presbyterian Villages of Michigan  
Ralph C. Wilson, Jr. Foundation  
Region 2 Area Agency on Aging  
Select Rehabilitation, Inc.  
St. Joseph Mercy Chelsea  
St. Joseph Mercy Health System  
St. Louis Center  
U. S. Department of Housing  
and Urban Development  
UAW-GM Training Center  
United Methodist Association  
University of Michigan  
Volunteers of America



# UMRC FOUNDATION

## WESLEY LEGACY SOCIETY

We are honored to remember the following group of over 200 treasured friends who left a legacy of caring by including UMRC Foundation in their estate plans. Their generous gifts, totaling over \$12 million, reflect their steadfast belief in UMRC and its faith-filled mission of service to older adults. Though they are gone, their legacy continues.

### **\$1 MILLION+**

Mrs. Edith K. Brinkman  
Mrs. Elsie Flaishans  
James and Anne Ford Trust

### **\$100,000 – 999,999**

Mildred Asselstine  
Eleanor and John A. Bott  
Mrs. Helen Carow  
Marjorie and William James Connor  
Mrs. Beatrice Edwards  
Mr. Paul E. Egelkroud  
Mr. Stanley A. Evans  
Ruby I. and Harold W. Fassold  
Julia Freer  
Mary V. Good  
Mildred A. Grams  
Alta and Gerald Henry  
Lemmie A. Jenkins  
Mrs. Rose H. Kahn  
Mrs. Maxine Lahti  
Audrey Lang  
Evelyn McSweeney  
Hazel Mead  
Elizabeth C. Nace  
Rev. John Parrish  
Mrs. Jean A. Parrott  
Mr. Delbert Seybold  
Alice D. Stuck  
Alice C. Terry  
Lois and William Triplett  
Mrs. Bernita Vandervoort  
Patricia A. Weimeister  
Mrs. Ruth V. Williams

### **\$10,000 – 99,999**

Anonymous (1)  
Mrs. Mary Lou Adams  
Catherine Anderson  
Mr. Gordon Arthur  
Deborah Bacon  
Lillian A. and Richard C. Balmer  
Reginald Bennett  
Barbara and Donald Bock  
Della Boyer  
Mary L. and Carroll E. Caldwell  
Mrs. Alice Campbell  
Miss Rosalynn L. Chapel  
Mr. George Convis  
Mayble and Wallace Cripps  
Mary E. Curtis  
Marion A. and C. Dale Curtiss, and Jean S. Curtiss  
Bishop Jesse and Mrs. Annamary DeWitt  
Mrs. Marjorie Dodson  
Anna Dorney  
Nora B. and William A. Dunning  
Miss Martha Earles  
Mr. Fred W. Ford  
Genevieve and William Fraser  
Miss Berniece Frederick  
Miss Mildred Fritz  
Florence Geiler  
Arthur M. Grant  
Mrs. Mildred Haas  
Mary D. and Floyd L. Haight  
Miss Doris Haynes  
Mr. Gerald Hoddy  
Helen L. and Fred D. Hoerger  
Arlene B. Howe

Bettie J. Hunt  
Richard Jones  
Mr. and Mrs. Leland Kayner  
Mrs. Mildred Kelly  
Rev. Kearney and Mrs. Esther Kirkby  
Arley and Edward Lake  
Lucy M. Lake  
Howard Lausen  
Patricia and James Lawson  
Twyla A. and Earl E. Lehman  
Mrs. Helen Leonard  
Mrs. Elizabeth Loder  
Mrs. Norma J. Lowes  
George W. Martin  
Mrs. Mary W. McDonald  
Henrietta and Leroy B. McNally  
Marion D. Miller  
Agatha S. and Grant Morgan  
Mrs. Dolena Morrison  
Mrs. Margaret Morrow  
Virginia Moshier  
Esther and Clarence Nicolai  
Maxine M. Orr  
Lucille and John Peacock  
Helen and E. Read Peirce  
Mrs. Martha M. Penrod  
Richard G. and Janet T. Petershagen  
Mildred Phillips  
Mrs. Sara Pleuss  
Jennie and Marion Prosser  
Beatrice H. and Norman J. Rada  
Mr. John O. Ramsey  
Marietta Richards

Dr. Thomas R. and Mrs. Patricia Riggs  
Paul F. and Virginia Roekle  
Mr. Albert E. Rowe  
Jane and Raymond Schairer  
Marian Schilling  
Elizabeth and Roy F. Schroeder, Jr.  
Genevieve and Richard Shaw  
Edna H. Shoner  
Miss Letha G. Stevens  
Annabelle Sumera  
Mary Szor  
Ms. Grace E. Taper  
Mr. Everett C. Tranbarger  
Mr. Russell Tritten  
Mary E. Tuttle  
Mr. J. William Verschoor  
Mr. and Mrs. Don Vogelsberg  
Phyllis Wambaugh  
Raymond C. Wentz  
Mr. Paul Wightman  
Mr. George H. Wolter  
Mrs. Berniece Yerge

### **UNDER \$10,000**

Revs. Mary and Paul Albery  
Faith Alway  
Mr. Harold Anderson  
Mr. and Mrs. Ralph R. Anderson  
Leola Armstrong  
Ruth Arnold  
Mrs. Grace Ball  
Marshall C. Bovee  
Thomas Keith Henry Burnham, M.D.  
Wilda M. Bradley





Chelsea Retirement Community



"Our family is so grateful for the time our father/grandfather, C. Mark Gilson, spent at Dancey House. This time included all the **warm friendships and kind deeds** that everyone provided him. He stated over and over how he could not have lived in a better place because of **the people.**"  
– the family of C. Mark Gilson

Mr. Ralph Brooks  
Miss Ferne E. Brown  
Mildred B. Chipman  
Mr. Lon M. Dickerson  
Mr. Ewart Dilks  
Dorothy C. and John Eddy  
Mrs. Willa Finch  
Nellie Flood  
Dr. Winslow and  
Mrs. Elizabeth Fox  
Rev. Herbert and  
Mrs. Olive Mae Glenn  
Mr. Robert Graham  
C.H. Harrison  
Helen Higgins

Miss Margaret Hodges  
Elaine and Howard Holder  
Mr. Forestine Jenkin  
Lorene Jones  
Esther L. Kennedy  
Marjorie A. Kirn  
Matilda M. Kramer  
Elsie Krill  
Mrs. James Large  
Mrs. Phyllis Legg  
Agnes C. Lutton  
Lena Maneu  
Miss Lenora E. Manore  
Ruth McLeod  
Frances P. and George Mercea

Bess Milliken  
Mrs. Bessie Morrow  
Mrs. Martha E. Musson  
Mrs. Gladys H. Naleid  
Mr. Marvin Nelson  
Katharine J. Newbound  
Mary S. Newcomb  
Helma Newman  
Helen Pearson  
Eloise E. Pollard  
Mrs. Syma S. Poobus  
Ara Popp  
Mary A. Ragland  
Jeanne and Eugene Ransom  
Mr. and Mrs. George W. Renton

Lloyd Riggs  
Mr. Arthur B. Schuman  
Mr. Harry Sisson  
Gertrude Spaulding  
Lucille E. and Clarence Steffey  
Mr. Ernest R. Stokes  
Laurene Swartz  
Jane E. Tennant  
Mrs. Earl Trites  
Mrs. Ruth Warring  
Mrs. June A. Wells  
Orpha H. Williams

## CURRENT WESLEY LEGACY SOCIETY MEMBERS

Mrs. Janet Alford  
Bryan and Wendy Brightman  
Mr. and Mrs. Richard F. Brown  
Ms. Kate Collins  
and Mr. Erich Klun  
Jack and Marianne Conner  
Mr. and Mrs. Norman F. Ehlers  
Mrs. Betty J. Emmert  
Bruce and Kristy Franklin  
David N. and Louise M. French  
Dr. James E.  
and Mrs. Dorothy J. Greer  
John and Martha Hicks  
Rev. James  
and Mrs. Viola Hilliard  
Mrs. Vesta Pauline Hons  
Mr. H. William  
and Mrs. Marilyn Ives  
Mr. Willard Johnson  
Frances and Stanley Jones  
Mary Lou Jury  
William and Betsy Kincaid  
Amelia M. Kopicko

Sheryl Laughren  
Margaret A. Leary  
and Russell R. Serbay  
Rev. George  
and Mrs. Carolyn Luciani  
Dick and Ellen Lundy  
Mrs. June L. Lynch  
Mr. and Mrs. Thomas  
B. McMullen  
Carol S. Mills  
John and Cindy Nixon  
Betty L. Pope  
Lori and Traci Potter  
Mr. Lawry Reid and  
Mrs. Linda Ferrier-Reid  
Mr. and Mrs. Robert J. Reid  
Margaret E. Rink  
Mr. Michael Rivard  
Alberta Sabin  
Dick and Norma Sarns  
Mrs. Jean E. Sayre  
Dr. Paul and Connie Schubert  
Edythe W. and Louis G. Scovill

Rev. and Mrs. Russell L. Smith  
Mr. and Mrs. Charles H. Sprau  
Mr. Roger and  
Mrs. Lorraine Spry  
Joann and Ralph C. Stahman

Suzanne Stevens  
Mr. and Mrs. Max Supica  
John and Laura Thorhauer  
Nancy and Steve Wiley

\* *Italics indicates donor has passed away*

Gardens Beautify UMRC Campuses.







Glazier Commons Koi Pond and Cutting Garden



## CHURCHES AND AFFILIATES

Aldersgate UMC  
Ames UMW\*  
Bancroft UMC  
Bethany UMC  
Big Beaver UMW  
Birch Run UMC\*, UMW  
Brown City UMW  
Burton Community UMC  
Calvary UMW – Holly  
Carleton UMM, UMW\*  
Christ UMW – Crystal Falls\*  
Clawson UMW  
Clayton UMW\*  
Commerce UMC, UMW\*  
Conant Avenue UMC  
Court Street UMC  
Davison UMC, UMW\*  
Dixboro UMC\*  
Embury Women of Spirit  
Engadine UMW\*  
First UMC – Belleville  
First UMC\*, UMW – Chelsea  
First UMC – Escanaba  
First UMC, UMW\*  
– Farmington

First UMC – Hancock  
First UMC – Hazel Park  
First UMC, UMW – Hudson  
First UMC – Northville  
First UMC – Plymouth\*  
First UMC – Saline\*  
First UMC, UMW\*  
– South Lyon  
First UMC – West Branch\*  
First UMC – Wyandotte  
First UMW – Albion  
First UMW – Birmingham\*  
First UMW – Ferndale  
First UMW – Menominee  
First UMW – Midland  
First UMW – New Lothrop  
First UMW – Port Huron  
First UMW – Richmond  
First UMW – Royal Oak\*  
First UMW – Troy  
Flint Bethel UMC  
Genesee UMC\*  
Gordonville UMW\*  
Grace UMW – Bay City  
Grand Blanc UMC\*

Grosse Pointe UMW\*  
Gwinn UMC  
Harbor Beach UMW\*  
Hemlock UMW  
Henderson UMC  
Ironwood Wesley UMC  
Juddville UMC  
LaPorte UMC  
Lennon UMC  
Lincoln Park UMC – Flint  
Linden UMC\*  
London UMC  
Manchester UMC  
Maple Rapids UMW\*  
Mapleton UMC  
Marble Memorial UMW  
Metropolitan UMC, UMW  
Michelson Memorial UMW\*  
Middlebury UMC  
Morrice UMW  
Newberry UMW  
North Lake UMC  
Oak Grove UMW  
Ontonagon UMC\*, UMW  
Ortonville UMW\*  
Ossineke UMC  
Otisville UMC  
Petersburg UMC\*  
Phoenix UMC  
Pittsburg UMC

Romeo UMC\*  
Romulus Community UMC  
Sharon UMC  
Silverwood UMW  
St. Ignace UMW  
St. Matthew's UMW – Livonia\*  
St. Paul's UMC – Monroe\*  
St. Paul's UMW  
– Bloomfield Hills\*  
St. Paul's UMW – Cheboygan\*  
St. Paul's UMW – Rochester\*  
State Street UMC  
Swartz Creek UMC\*, UMW\*  
The Peoples Church  
Thetford Center UMC, UMW\*  
Trenary UMC  
Trinity UMC – Chesaning  
Trinity UMC, UMW – Owosso  
Trinity UMC – Roseville  
Trinity UMC – Waterford  
Trinity UMW – Fowlerville\*  
Trinity UMW – Lapeer\*  
Utica UMC\*  
Walled Lake UMC\*  
Waterford Central UMC  
Wesley UMC – Ishpeming  
West Forest UMC  
West Side UMW – Ann Arbor\*  
Wilber UMC

\*Donor has given ten consecutive years or more



The female participants of UMRC's Thome PACE in Jackson celebrated Mother's Day with a tea party in May. Linda DeVore, Thome PACE Chaplain, told the group, **"We need each other! You are each a masterpiece, a special creation of God."**





Dick Wagner and bike.



Residents Visit and Enjoy the Gardens at UMRC.

## CORPORATE GIFTS AND SPONSORSHIPS

Together with our Corporate Sponsors, UMRC is *United to Serve!*

Anonymous (1)  
Acoustic Ceiling & Partition  
Company, Inc.  
AK Lawncare, Inc.  
All-Med Medical Supply, LLC  
American Title Company  
The Andrews Group  
Ann Arbor Fabrication, Inc.  
Architects Design Group, Inc.  
Arthur Gallagher & Co.  
Baker Tilly Virchow Krause, LLP  
CareLinc Medical Equipment  
and Supply Co., LLC  
Chelsea Lumber Company

Chelsea Retirement  
Community Resident Council  
Chelsea Rhone LLC/Healthcap  
Chelsea State Bank\*  
Clawson Rotary Club  
The Closet Company  
of Mid-Michigan  
Douglas N. Higgins, Inc.  
Elzinga Volkers Construction  
Professionals  
Fund Evaluation Group, LLC  
GMB Architecture &  
Engineering  
Green Magic Growers, LLC

Heydlauff's Appliances &  
Electronics  
Huntington National Bank  
Huron Valley Ambulance  
Innerspace Design, Inc.  
LeadingAge Michigan  
Midwestern Consulting, Inc.  
Old National Bank  
PEO Sisterhood Chapter FD  
Peters Building Company  
Priority Health  
Resch Strategies  
Richner & Richner, LLC  
Silver Maples of Chelsea

Smith Haughey Rice & Roegge  
St. Joseph Mercy – Chelsea  
St. Joseph Mercy Health System  
St. Louis Center  
Starling Center for  
Organizational Development  
Tenneco Inc.  
Tokai University Tour Group  
University of Michigan  
Vanston/O'Brien, Inc.  
Voss Insurance  
Wolverine Steel Erectors, Inc.  
Worksighted

## GIFTS OF \$2,000 OR MORE – INDIVIDUALS AND FOUNDATIONS

Anonymous (1)  
Anonymous (5)\*  
Ann Arbor Area Community  
Foundation  
Annabelle Foundation  
Aroha Philanthropies  
Mr. Ronald E. Austin  
Cliff and Isabel Bath\*  
Guadalupe Bravo and Peggy  
McDonagh Bravo  
Bryan and Wendy Brightman  
Mr. and Mrs. Richard F. Brown\*  
Buhr Foundation  
Ms. Kate Collins and  
Mr. Erich Klun\*  
Community Foundation for  
Southeast Michigan  
Jack and Marianne Conner\*  
Rev. Dr. Joe and Jenny Conte  
Susan Georgine Craig\*  
Dale and Gwen Dunlap  
Syreta Earl

Jeff and Ginny Edleman  
Edward F. Redies Foundation, Inc.  
Mr. and Mrs. Michael Feeney  
Mr. and Mrs. Peter Feeney  
Steve and Kristen Fetyko  
David N. and Louise M. French  
Leonard D.  
and Christine M. Frescoln  
Dorothy J. Greer\*  
Mr. and Mrs. Robert Griffiths  
Patti Harris  
The Harry A. and Margaret D.  
Towsley Foundation  
The Harry and Jeanette  
Weinberg Foundation, Inc.  
Mr. and Mrs. Jim Henderson  
John and Martha Hicks\*  
Janet K. Holbrook\*  
Carole and Howdy Holmes  
Mr. and Mrs. Ray D. Holmes, Jr.\*  
Mr. Elliott Hudgins  
Mr. and Mrs. H. Russell Ives\*

Mr. Willard Johnson  
Mr. and Mrs. Rodney E. Jones\*  
Brian and Margaret Kidston  
Dr. Kent Krach  
and Mr. Alan Sassman  
Mr. and Mrs. Richard H. Kraft\*  
Dr. and Mrs. Bruce A. Kresge\*  
Cynthia Kresge  
and Dennis Furlong  
The Kresge Foundation  
Mrs. Mary A. Livingston  
Chad Losey and Jeff Hall  
David and Louise Lutton  
The Mandel Foundation  
Ashley Martin  
John H. Matthews  
Mr. and Mrs. Thomas B.  
McMullen  
Michigan Health  
Endowment Fund  
Carol S. Mills\*  
John and Cindy Nixon\*

Mr. Ouimet and Dr. Hrozencik  
Rev. Gerald Parker  
and Mrs. Holly Craig  
Betty L. Pope\*  
Lori and Traci Potter  
Ralph C. Wilson, Jr. Foundation  
Margaret E. Rink  
Mark and Mary Royce\*  
Dick and Norma Sarns\*  
Mr. Lawrence Sharley  
Ingrid and Clifford Sheldon\*  
Mr. and Mrs. Robert Smith  
Mr. and Mrs. Ed Southworth  
Mr. and Mrs. Max Supica\*  
Mr. and Mrs. Robert M.  
Thompson\*  
John and Laura Thorhauer\*  
Gary and Linda Vander  
Haagen\*  
Ambassador Ronald Weiser  
Nancy and Steve Wiley\*  
Mrs. Shirley Woodard



The forward thinking design of the Prairie Cottages.



UMRC's beautiful new **Prairie Cottages** on its Chelsea campus are attracting a lot of attention! Fifty-four upscale independent living cottages are either finished or underway, with construction slated for completion by September! Only a handful are unspoken for, so don't delay! To learn more about making the Prairie Cottages **YOUR** new home, contact Sales and Admissions at **734.433.1000 ext. 7365**.

## 2017 DONORS

Anonymous (3)  
Anonymous\*  
Mr. David Adams  
Dr. and Mrs. Darryl Albright  
Mrs. Janet Alford  
Mrs. Dorothy C. Amato  
Mr. and Mrs. Tim Andrews  
Mr. and Mrs. Paul Apostol  
Dr. and Mrs. Daniel E. Atkins III  
Mrs. Mary B. Austin  
Mr. Ronald E. Austin  
Mr. and Mrs. Michael Aznavorian\*  
Mark and Jane Banaszak-Holl  
Mr. Marc Jackson  
and Dr. Debra Barton  
Cliff and Isabel Bath\*  
Dr. Marjorie Becker  
Mr. and Mrs. Rodney Beckwith III  
Mr. William Bell  
Dr. Andrew H. Berry, DO\*  
Mr. and Mrs. James L. Bertram  
Dr. Mary Blazek  
Mr. Raymond Blessman  
Mr. and Mrs. Phil Borkowski  
Dr. and Mrs. John Boyse  
Caralyn Brace  
Mr. Donald E. Bratt\*  
Guadalupe Bravo and  
Peggy McDonagh Bravo  
Mr. and Mrs. Dennis Brewer  
Mr. and Mrs. Richard F. Brown\*  
Mr. Frank Bruni  
Mr. R. Mason Buckingham  
Mr. and Mrs. John Buley  
Mr. and Mrs. Charles Bumpus  
Barbara I. Burns\*  
Ms. Susanne Buxton\*  
Mr. and Mrs. Donald Callihan\*  
Mr. Brian Cameron

Grace Cameron  
Carol J. Capell  
Mrs. Beverly J. Carlisle  
Mrs. Marian N. Chambers  
Mr. Michael Champ  
Mr. and Mrs. William D. Chandler  
Mr. and Mrs. Thomas Chapell  
Mr. and Mrs. John B. Chapman\*  
Dolores Chatigny  
Dr. Christine Cigolle  
Mr. and Mrs. Mark Coakley  
Mrs. Shirley Collica  
Mr. Brian Clay Collins  
Elizabeth Conner  
Jack and Marianne Conner\*  
Rev. Dr. Joe and Jenny Conte  
Dr. and Mrs. Ralph Cook  
Mr. and Mrs. Howard Cooper  
Mrs. Cecilia E. Corazza\*  
Dr. Richard E. Corpron  
Mrs. Margaret Cosgray  
Mr. Robert Couch  
Armand and Jaya Coulson  
Mr. and Mrs. George Cousins\*  
Dr. and Mrs. Mark Cowen  
Mr. and Mrs. Clifford Craig  
Dorothy Craig  
Susan Georgine Craig\*  
Mrs. Sue Crittenden  
Mr. and Mrs. John W. Curnow\*  
Mrs. Joan Curreri\*  
Rebecca L. Curtiss  
Dr. Miriam Daly  
Mrs. Eunice Dancer  
Carolyn Danielson\*  
Fred and Maria Davis  
Mr. and Mrs. Hal Davis  
Rev. Dr. and Mrs. Alan DeGraw\*  
Margaret Diener  
Mr. and Mrs. Robert G. Dillon

Mr. and Mrs. Dane Dixon  
Colleen Dolan-Greene  
and Trey Greene  
Dr. Barbara Doss-Karluk  
and Dr. Michael Karluk  
Dale and Gwen Dunlap  
Syreta Earl  
Jeff and Ginny Edleman  
Mr. and Mrs. Thomas Eland  
Mrs. Odes Elden  
Mr. and Mrs. Jeffrey Ellis  
Mr. and Mrs. Roderick W. Failing\*  
Mr. and Mrs. Ben Farabee\*  
Mrs. Carolyn Farthing  
Mr. and Mrs. Marc Feeney  
Mr. and Mrs. Michael Feeney  
Mr. and Mrs. Peter Feeney  
Mr. and Mrs. Brian Ferrier  
Dr. and Mrs. Thomas Ford  
Mr. and Mrs. James P. Foshee  
Mr. and Mrs. Robert B. Foster\*  
Marcia Fox  
Mr. and Mrs. Versile Fraleigh\*  
Mr. and Mrs. Jeff Frank  
David N. and Louise M. French  
Leonard D. and Christine M. Frescoln  
Mr. and Mrs. Michael H. Fritz  
Evva M. Funk  
Mrs. Bene Fusilier  
Mr. and Mrs. Chris W. Gallup  
Janet Gekiere  
Mr. and Mrs. Harry W. Gibson  
Mr. and Mrs. Kenneth Gietzen  
Mrs. Joanne Green  
Dorothy J. Greer\*  
Mrs. Mary Lou Griffin  
Mr. and Mrs. David Griffiths  
Mr. and Mrs. Robert Griffiths  
Mr. and Mrs. Norman L. Gruber, Jr.

Mr. and Mrs. William R. Guilford\*  
Mr. and Mrs. Ron Gulbranson  
Mr. and Mrs. William T. Halls\*  
Nellie Flood  
David and Patricia Hanna\*  
Mr. and Mrs. Douglas Hanton\*  
Mr. and Mrs. Alan Harder  
Mrs. Laura M. Harper  
Patti Harris  
The Reverends Thomas and Pauline Hart  
Dr. and Mrs. Earl Hartwig  
Mrs. Donna Hellman  
Mr. and Mrs. David Helmer  
The Herbel Family  
Lisa Herrick  
Anna Jordan Hicks  
John and Martha Hicks\*  
Mr. and Mrs. Harry E. Hinkston  
Kay G. Hinkston\*  
Peggy J. Hoblack\*  
Mr. David Hoffman  
Janet K. Holbrook\*  
Mr. and Mrs. Paul F. Hollenberg  
Mr. and Mrs. Roger D. Holm\*  
Ann Holmes  
Carole and Howdy Holmes  
Mr. and Mrs. John W. Holmes\*  
Mr. and Mrs. Ray D. Holmes, Jr.\*  
Mr. and Mrs. Robert B. Holmes  
Mr. Thomas Hosinski  
Mrs. Mary Lou Howard  
Mr. and Mrs. Brian Hoxie  
Mr. Jason Huber  
Mr. Elliott Hudgins  
Patricia Hume and Ken Lumm  
Mr. and Mrs. Donald Inglis  
Mr. and Mrs. H. Russell Ives\*  
Dr. and Mrs. John A. Jennings  
Dr. and Mrs. Marvin Jewell  
Mr. Willard Johnson

\*Donor has given ten consecutive years or more





Ollie Lamb Sanders and Elmer Sanders



Elmer Sanders and Ollie Lamb Sanders found a second chance for love and companionship at UMRC. "We have a lot of fun together and laughing is one of our hobbies," says the couple. Elmer and Ollie make gifts and volunteer their time to the UMRC Foundation. **"It is our way of giving back and sharing our love with our UMRC friends."**

Mr. and Mrs. William J. Johnson  
Dr. Phyllis Jonas  
Dr. Barbara M. Jones  
Mr. and Mrs. Bruce Jones  
*Mr. Ermil Jones*  
Mr. and Mrs. Rodney E. Jones\*  
Mr. and Mrs. David Jorgensen  
Mr. and Mrs. Kenneth Kapka  
Mrs. Carolyn Kauffman  
Brian and Margaret Kidston  
William and Betsy Kincaid\*  
Katherine King  
Mr. Kurt Tiesman  
and Mrs. Kerry Klee-Tiesman  
Andrea Kline and Paul Evanoff  
Mr. and Mrs. Walter Knepley  
Ingrid Koepcke  
Mr. and Mrs. John Kotre  
Dr. Kent Krach and  
Mr. Alan Sassman\*  
Mr. and Mrs. Richard H. Kraft\*  
Mr. and Mrs. Kenneth W. Krause  
Mary E. Krausse\*  
Dr. and Mrs. Bruce A. Kresge\*  
Cynthia Kresge and Dennis  
Furlong  
Mr. and Mrs. Albert L. Laemmel\*  
Carla J. Lambarth\*  
Mr. and Mrs. Tim Larsen  
Mrs. Marilyn H. Larson  
Sheryl Laughren  
Mrs. Barbara Lawton  
Margaret A. Leary  
and Russell R. Serbay  
Mr. and Mrs. Howard Ledbetter  
Mrs. Katherine R. Leffler  
Mrs. Vonda A. Lemon\*  
Mr. and Mrs. Jason F. Lindauer  
Mrs. Mary A. Livingston  
Col. and Mrs. Carl W. Lord  
Chad Losey and Jeff Hall  
Mrs. Dorothy Loudon\*  
Mrs. Inez Luce\*

Mrs. Carolyn Luciani\*  
Mr. and Mrs. Eugene Luckhardt  
David and Louise Lutton  
The Bob and Jan Lyons  
Foundation  
Rev. and Mrs. Charles R. Marble\*  
Mr. Robert Mast\*  
John H. Matthews  
Mrs. Martha Mayer  
Rev. and Mrs. Brent McCumons  
McDaniel Family Foundation  
Mr. Andy McLeod  
Mr. and Mrs. Thomas B.  
McMullen  
Dr. Barbara  
and Rev. Dr. Douglas Mercer  
Mr. and Mrs. James Meretta  
Mr. and Mrs. John W. Merkel\*  
Mr. and Mrs. Jon Midbo\*  
Dolores Millard  
Rev. and Mrs. Mark A. Miller  
Carol S. Mills\*  
Mr. and Mrs. Gerald M. Mittlestat  
Mrs. Mary E. Mostaghim  
Mr. David Murdock  
Mr. and Mrs. Roger L. Myers\*  
Mrs. Irene Naegeli  
Mr. and Mrs. Joseph Nagel, Jr.\*  
National Kidney Foundation  
of Michigan, Inc.  
Mrs. Kathleen Nesbitt  
John and Cindy Nixon\*  
Mrs. Dorothy M. Nobilette\*  
Mrs. Christina M. Normile\*  
Mr. and Mrs. Ed Nuernberg  
Mr. and Mrs. Jerol S. Olson\*  
Mr. and Mrs. Melvin E. Orchard\*  
Jane Ostrander  
Mr. Ouimet and Dr. Hrozencik  
Janet L. Oyer  
Mr. and Mrs. Gary Packard  
Mr. Adrian S. Palmer  
Rev. and Mrs. John Park

Rev. Gerald Parker  
and Mrs. Holly Craig  
Mrs. June Parker  
Dr. Henry Paulson  
Mr. and Mrs. Eric J. Pelton\*  
Rev. Dr. and Mrs. Joseph Perez  
Mr. and Mrs. William H.  
Pettibone, Jr.  
Pfizer Foundation  
Mr. and Mrs. Thomas Phillips  
Mr. and Mrs. Thomas Piatkowski  
Rosemary J. Piatt\*  
Mr. Paul Pickett  
Betty L. Pope\*  
Ms. F. Marie Popp  
Mr. and Mrs. Thomas Powers\*  
Paul Pratt and Denise Chrysler  
Mr. and Mrs. Robert A. Pratt  
Mr. and Mrs. Don Priest  
Dr. and Mrs. Frank H. Quinn  
Mrs. Alice Rhodes  
Sandy Richardson  
Mr. and Mrs. Darrell C. Richmond\*  
Marion K. Ringe\*  
Margaret E. Rink

Mrs. Mary A. Robb  
Dawn Roberts  
Mr. and Mrs. Bruce Romant\*  
Mr. Greg Rosell  
Mrs. Joyce M. Ross  
Mr. and Mrs. Philip Rundell  
Mr. and Mrs. James Samborn  
Mr. Elmer Sanders  
and Mrs. Ollie J. Lamb Sanders\*  
Dick and Norma Sarns\*  
Mr. and Mrs. Steven Sarns  
John Savage and Brenda Schmitz  
Mr. and Mrs. Frederick E.  
Schmid  
Dr. and Mrs. Paul Schubert  
Mrs. Marian Schultz  
Mr. and Mrs. Dale Schumann  
Mr. and Mrs. Ronald Seamans  
Mr. and Mrs. John Seeley  
Mr. and Mrs. Michael Selwa  
Mr. and Mrs. Peter Severn  
Mr. and Mrs. Francis Shaklee  
Mr. Lawrence Sharley  
Ingrid and Clifford Sheldon\*

#### A Rivertown Resident at the Annual Block Party.







Well-Tended Landscapes Provide Bright Color.



UMRC Excels by Putting People First.

## 2017 DONORS

(continued)

Mr. and Mrs. Laird  
Shingledecker\*  
Susanne Shipley  
Mr. and Mrs. Marvin  
Silverthorn\*  
Mr. Joseph G. Slowins\*  
Mr. Daniel Smith  
Mrs. Martha L. Smith  
Mr. and Mrs. Robert Smith  
Rev. and Mrs. Russell L. Smith  
Mr. and Mrs. Wayne Sommer  
Mr. and Mrs. Ed Southworth  
Mr. and Mrs. Robert Spaly  
Mr. and Mrs. Keith R. Speiran  
Mrs. Barbara L. Spencer  
Mr. and Mrs. Bradley Spry  
Mr. and Mrs. W. Edward Staple\*  
Mrs. Leah Steffey  
Dr. Mary E. Stefl\*  
Mrs. Kathryn Steinaway  
Mr. and Mrs. Michael D.  
Steinhauer\*  
Georgine M. Steude, MD  
Dr. and Mrs. Floyd Stevens, Jr.  
Suzanne Stevens

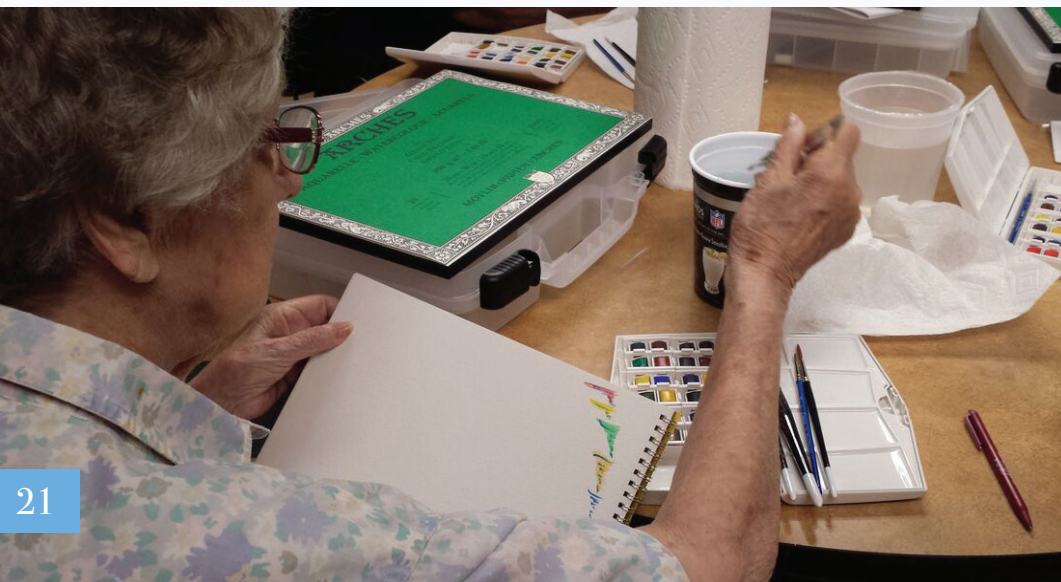
Barbara Stowell  
Dr. Jannifer Stromberg  
Ms. Vera M. Stuckey\*  
Mr. and Mrs. Gerald T. Sundberg  
Mr. and Mrs. Emil Sunley  
Mr. and Mrs. Max Supica\*  
H.W. Suter Foundation\*  
Mr. and Mrs. Witold Szytkiel  
Mr. and Mrs. Ted Szufnar  
Mr. Douglas Taylor  
Dr. and Mrs. Mark Theobald  
Mr. and Mrs. Robert G. Thom\*  
Marjorie J. Thomas\*  
Mr. and Mrs. George Thompson\*  
Mr. and Mrs. Robert M.  
Thompson\*  
Susan M. Todd  
Carole Tollaksen  
Mrs. Thelma Tucker  
Mr. and Mrs. Nub Turner  
Barbara Underwood  
and David Patria  
Gretchen Valentine  
Mr. and Mrs. William  
Van Denburg

Mr. and Mrs. Richard Van House  
Mr. and Mrs. Peder G.  
Van Houten  
Margie Van Meter  
Mrs. Carole van Reesema  
Mr. Benjamin Van Tuyl  
Gary and Linda Vander Haagen\*  
Kathleen P. Vessey  
Mr. and Mrs. Don C.  
Vogelsberg  
Mr. and Mrs. James Waltz  
Mona Walz  
Dr. Robert P. Ward  
Mrs. Noreen Watza  
Mr. and Mrs. Brian D. Weber\*  
Ambassador Ronald Weiser  
Miss Zelma Weisfeld  
Mr. and Mrs. Lawrence Weting\*  
Mr. and Mrs. Robert White  
Brenda Sue Wickett  
Charles and Arlyle Wilcox  
Mr. and Mrs. Jerome B.  
Wilczynski  
Nancy and Steve Wiley\*  
Mrs. Patricia Williams

Mr. Alan Willoughby  
Mr. and Mrs. Gerald Wilson  
Mr. Jack Wilson  
Mr. Kurt Wohltjen  
Mrs. Shirley Woodard  
Woollitt Memorial Foundation\*  
Mr. Alfred Wooll  
Mrs. Mary Gretchen Zale  
Mr. Henry Zelisse\*  
Mr. and Mrs. John A.  
Zimmerman

We are also grateful  
to our many  
supporters  
who made a gift  
**under \$100.**  
Thank you!

\*Donor has given ten consecutive years or more



Artful Aging Painting Classes  
nurture the talents of our  
community members.

Life Enrichment  
programming is a priority  
for the UMRC Foundation's  
**Growing to Serve** campaign.  
For more information,  
contact the UMRC  
Foundation at **734.433.1000**  
**ext. 7502.**





## "Music is such a medicine for the soul.

Whether we are strumming, playing chords, or counting rhythms, it is fun and invigorating to be part of a group learning to work and play together." – Chelsea Retirement Community resident Rosemary Alexander-Jones who participated in the Artful Aging Ukulele class, made possible by a grant from Aroha Philanthropies.



Artful Aging Ukelele Class Performs Concert.

## EMPLOYEE HONOR ROLL

UMRC's dedicated, professional staff members make a difference in the lives of older adults every day. We are thankful for those who made a gift to the UMRC Foundation in 2017.

Anonymous (29)  
Autumn Ambs  
Anthony Andersen  
Cindy Andress  
Ken Baillie  
Shannon Bater  
Karley Bennett  
Brandy Berghoff  
Karla Bernath  
Christina Berry  
Rick A. Bluhm  
Heather Bowers  
Jewell Bremiller  
Wendy Brightman  
Alexandra Brown  
Jennifer Brown-Seagraves  
Kimberly Bucek  
Bev Burgett  
Brittany Burton  
Cheryl Carney  
Sandra Chapman\*  
Gale A. Chua  
Deirdre Claiborne  
Dawn T. Clark  
Jade Clark  
Holly Clay  
Karyn Clow  
Elizabeth Cofer  
Kate Collins\*  
Kristy Collins\*  
Crystal Cook  
Amy Craig  
Paris Crawley  
Sherry Cross

Kerry L. Crutchfield  
Auria A. Cummings  
Serenity Curling  
Laura Davis  
Susan Decker  
Catherine Degen  
Bonnie K. Dennes  
Linda DeVore  
Sharon Diuble  
Ashton Dixon  
Brenda Dixon\*  
Sandra Drabant  
Donielle Earls  
Angela Elliott  
Melissa Enyart  
India Evans  
Christen Ewers  
Sonja L. Felton  
Steve Fetyko  
Sue Fickau  
Jamie Flack  
Lisa Flack  
Lisa French  
Eunice Frey-Dobbs  
Heather Fry  
Natasha Furlong  
Danielle Gauntlett  
Jennifer Gould  
Cheryl Green  
Melissa Guernsey  
Heidi Guy  
Sandra Hart  
Donna Hartman  
Sean M. Hawley\*

Katherine H. Heffner  
Michelle Henderson  
Karen Hergenreder  
Dezerie Herzberg  
Debbie Hibbard  
Melanie R. Hicks  
Beth Hilyard  
Maria Hoard  
Gloria L. Hokanson  
Codi Hoover  
Bertie Hubbard  
Alissa Inman  
Geri Isaacson  
Natalie Jentzen  
Kaeleigh Johnson  
Samantha Jones  
Christine Joseph  
Cecilia Keiser  
Sara J. Keiser  
James Kelly  
Michele Kercher  
Courtnee Knepley  
Cassidy J. Koch  
Sara Kolasa  
April Kral  
Brooke Krutsch  
Jessica Kuhl  
Mary Kumbier  
Alicia Kurowicki  
Melissa Latter\*  
Ashley Martin  
Mary McCreery  
Sue McHenry  
Desiree McMurtrie

Valerie McMurtrie  
Scott Mead  
Michelle Mendez  
Sarah M. Middlebrook  
Sarah Millar  
Jasmine Mitchell  
Lisa M. Moore  
Daniella Mullins  
Julie Nixon  
Stacey Olson  
Rachael Osborne  
Karen Owen  
Chris Page  
Mariah Palmer  
Josephine Pezzullo  
Lindsay Pickrell  
Rob Polens  
Arynn Poole  
Lori Potter\*  
Sarah Queiros  
Cathy Rafferty  
Jennifer Ramsey  
Mia Rasheed  
Koren Rochefort  
Mark Royce\*  
Robert Ryan  
Lena Sakallah  
Daniela Samon  
Sara Schaller  
Crystal Schell  
Shirley Schultz\*  
Angela Serpetti  
Heather Shaw  
Rebekah Showerman

Angel Simmons  
Cathie Simmons  
Sharon Smith  
Jacqueline Snyder  
Emma Stark  
Janet Stover  
Mimi Suntheimer  
Julia K. Szuper  
Trisha Taylor  
James E. Thompson  
John Thorhauer\*  
Alyssa Trinkle  
Kimberly Vander Band  
Danielle VanTuyt  
Ann Marie Villarreal  
Nicole Vosters  
Bree Walters  
Tyson Washington  
Suzanne Waterbury  
Auncharee Wharton  
Danielle Wiese  
Sara Wild  
Donald Williams  
Patrice Williams  
Shane Williamson  
Brandi Wint  
Jena L. Wisely  
Alicia Wistrand  
Diana Worden  
Rebecca Wyse  
Rachel Ziegler  
Teresa Zimmerman

## To err is human; to forgive, divine.

Every effort has been made to ensure the information contained in the **2017 UMRC and UMRC Foundation Annual Report** is as accurate and complete as possible. In the event of an error or omission, please accept our apology and contact the UMRC Foundation office at 734.433.1000 ext. 7502 so that we may update our records. Thank you very much.

## COMMUNITIES IN *Harmony*

### **Chelsea Retirement Community**

805 West Middle Street  
Chelsea, Michigan 48118  
P: 734.433.1000

### **The Cedars of Dexter**

411 Cedars Lane  
Dexter, Michigan 48130  
P: 734.792.9702

### **The Pines**

325 Wilkinson Street  
Chelsea, Michigan 48118  
P: 734.433.9130

### **Silver Maples of Chelsea**

100 Silver Maples Drive  
Chelsea, Michigan 48118  
P: 734.475.4111

### **The Thome Rivertown Neighborhood**

250 McDougall Avenue  
Detroit, Michigan 48207  
P: 313.567.8045

### **Huron Valley PACE**

2940 Ellsworth  
Ypsilanti, Michigan 48197  
P: 734.572.5777

### **Thome PACE**

2282 Springport Road  
Jackson, Michigan 49202  
P: 517.768.9791

### **Senior Community Care of Michigan**

1921 East Miller Road  
Lansing, Michigan 48911  
P: 517.319.0700

## UMRC BOARD OF TRUSTEES

John W. Boyse, Ph.D.  
Peg Bravo  
Rich Brown  
Christine Cigolle  
M.D., M.P.H.  
Colleen Dolan-Greene  
Michael Fritz  
Kathleen Griffiths  
Rev. Dr. Matthew Hook  
H. Russell Ives

Sheryl Laughren  
Dick Lundy  
John Nixon III  
Michael Shore  
Edward Southworth  
Rev. Mark Spaw  
Sandra Wisniewski  
John Thorhauer  
UMRC President & CEO

## UMRC FOUNDATION BOARD

Karen Andrews  
Marianne Conner  
Rev. Dr. Joe Conte  
Gwen Dunlap  
Stephen Fetyko  
Lisa Herrick  
Chad Losey  
Tom McMullen  
John Nixon III

Mark Ouimet  
Henry L. Paulson, M.D., Ph.D.  
Steve Sarns  
Edward Southworth  
John Thorhauer  
UMRC President & CEO  
Wendy Brightman, CFRE, CFRM  
UMRC Foundation President



UNITED METHODIST  
RETIREMENT COMMUNITIES



[www.umrc.com](http://www.umrc.com)  
805 W. Middle Street, Chelsea, MI 48118



UNITED METHODIST  
RETIREMENT COMMUNITIES  
FOUNDATION